

Projection^{EU}

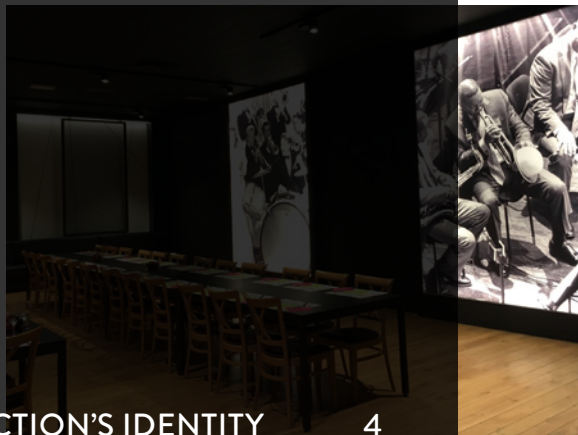
CREATIVE SOLUTIONS
IN SHOP LIGHTING

INTRODUCTION

Projection_{su}



PROJECTION'S IDENTITY	4
BORN IN BELGIUM	8
LIGHTOLOGY	10
OUR PROJECTS	12





PROJECTION'S IDENTITY

1 | SERVICE

PROJECTION.EU IS A COMPANY
IN FULL EXPANSION FOR
WHICH A PROFESSIONAL CLIENT
RELATIONSHIP IS KEY.

We aim for 100% client satisfaction. We offer a customized approach to each of our clients and our flexibility ensures we can react quickly to urgent requests.

We offer **A-Z project management**. When trusting your project to Projection.eu, you can be sure to count on our expertise and professional assistance, from the design of your shop to its opening and even after. Our full-fledged project assistance includes:

- **Comparative light study before and after:** our sales representatives will convince you of the difference Projection.eu can make during a demo in your shop
- **Rapid delivery:** efficient stock management and flexibility ensure we are able to react quickly to urgent orders and are in close control of what our clients need.
- Advice and guidance on how to **direct the lighting fixtures** in your store
- Professional **after-sales assistance and breakdown service**
- **Warranty** on all led modules and drivers
- Both our products and our packaging materials comply with very strict standards in terms of **recyclability**: more than 90% of our product components is recyclable and during transport we use recyclable boxes and paper



2 | RETAIL

**AS RETAIL LIGHTING SPECIALISTS,
WE UNDERSTAND THE VITAL ROLE
OF LIGHT IN YOUR POINT OF SALE.**

Light makes your products shine and influences how your clients feel. It creates an **ambiance** which makes people enter your shop and look at your products. Projection.eu helps you create an **inspiring shopping experience** for your clients through flexible lighting solutions.

As retail is Projection's **core business**, we are well aware that a retail environment has specific needs in terms of **energy consumption**:

- Our luminaires function with energy-efficient technologies
- Our luminaires integrate high-performance reflectors offering superior light quality while consuming less energy
- Energy-efficient shop lighting directly results in a lower level of heating and cooling needs

The retail world is in constant evolution: it's a reality we understand because we live it every day. Thanks to our **expertise in the field** we know which points need special attention and how to deal with complex lighting problems. As a real partner in retail lighting we accompany you, **from the first light plan to store opening**.

“Light makes your products shine
and influences how your clients feel.”

03 | CREATIVITY & INNOVATION

CREATIVITY IS THE STARTING POINT FOR EVERYTHING PROJECTION UNDERTAKES, IT IS ROOTED IN PROJECTION'S DNA.

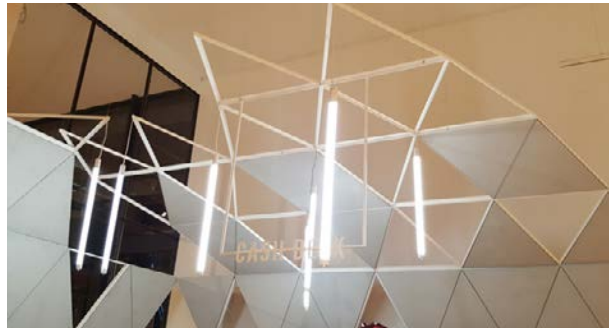
When designing a new luminaire or when working on **light concepts**, Projection's creative input and expertise is crucial in obtaining the desired result.



Creativity and inspiration are also fundamental in boosting **innovation**: we continually strive to develop new products integrating the newest technologies **to lead and light the way**.

Our creative **lighting designers' team** is trained to plan intelligently and to combine both their creative ideas and expertise efficiently in order to obtain the best possible lighting solution.

Projection.eu also offers **tailor-made solutions and decorative lighting elements** upon request to help create a unique ambiance in your shop.



“We continually strive to develop new products integrating the newest technologies to lead and light the way.”



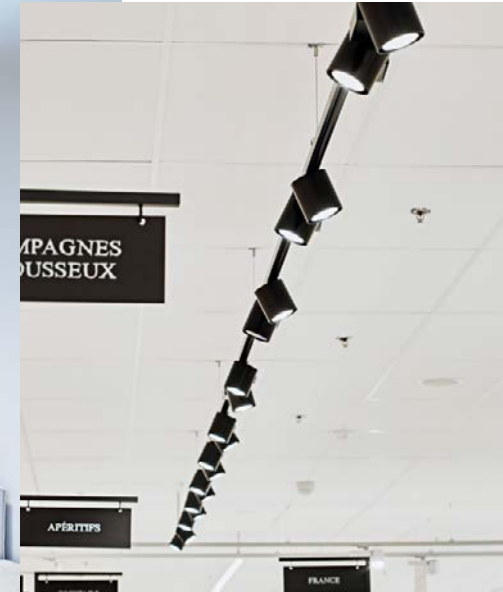
04 | QUALITY

OUR HIGH-END PRODUCT ASSORTMENT IS DEVELOPED TO OFFER THE LIGHTING SOLUTION WHICH BEST MEETS YOUR NEEDS.

Our passion for light and continued focus on innovation, quality and the specific needs of a retail environment push us forward to stay ahead in terms of **performance, dependability and user-friendliness** and come up with new high-performing luminaires. This also implies we always use **the latest technology available** for our product components.

- Our luminaires are **durable and built to last** and are subject to **strict quality controls & testing**.
- Projection.eu complies with all **European legal requirements**:
- WEEE: Waste Electrical and Electronic Equipment Directive
- RoHS: Restriction of Hazardous Substances Directive

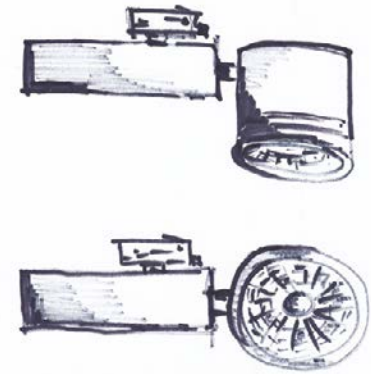
At Projection.eu we believe that caring for the environment is not only about consuming less energy. It is an attitude embedded in our ways of working. During every step of the process – from product design over manufacturing to store opening – we strive to minimize our environmental impact by using responsibly our resources – raw materials and energy – and means.



MANUFACTURING PROCESS

BORN IN BELGIUM

PROJECTION.EU IS A BELGIAN COMPANY located in the heart of Europe. Our luminaires are born in Belgium, from their conception and design to their final destination in retail environments all over the world. This is their fascinating manufacturing process.



1

DESIGN
& CONCEPT

2

DEVELOPMENT



3

TESTING
& OPTIMISATION



PRODUCTION

4



5

SHOP LIGHTING



LIGHTOLOGY

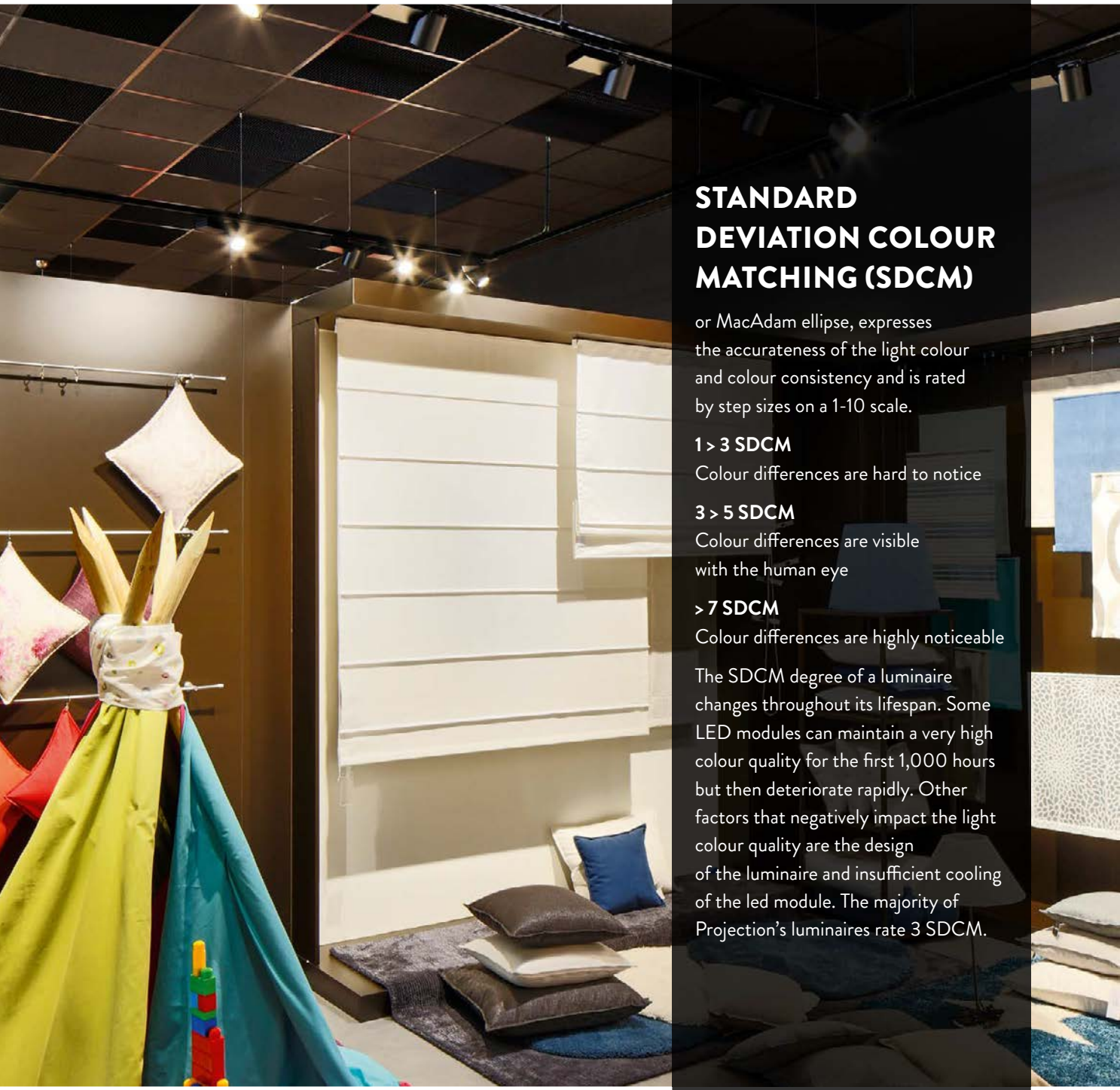
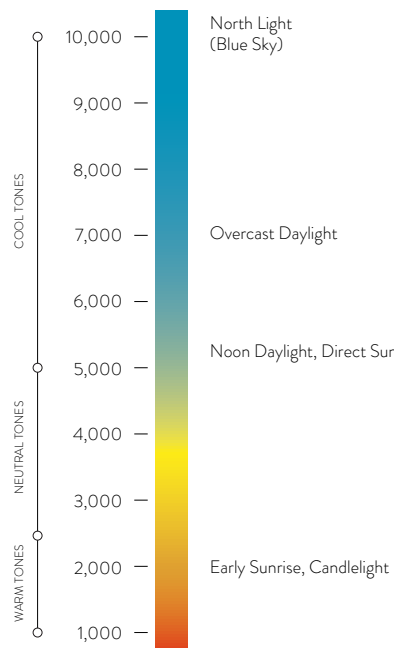
LIGHTING IS ONE OF THE STRONGEST INFLUENCES ON A CONSUMER'S EXPERIENCE IN A RETAIL ENVIRONMENT.

Effective lighting that adds drama to your merchandise motivates customers to buy, while poor lighting has an equal, but opposite, effect. An effective lighting plan does more than make your business environment more pleasant: it puts your business in the spotlight, where it belongs.

COLOUR TEMPERATURE

The Correlated Colour Temperature (CCT) measured in Kelvin, refers not to degrees, but to the colour quality of the light. “Warm” light sources have a colour temperature of 3000 Kelvin or below and cast a yellowish glow. “Cool” light sources, on the other hand, have a colour temperature of 4000K or above and cast a whiter, clearer light.

COLOUR TEMPERATURES IN KELVIN



STANDARD DEVIATION COLOUR MATCHING (SDCM)

or MacAdam ellipse, expresses the accurateness of the light colour and colour consistency and is rated by step sizes on a 1-10 scale.

1 > 3 SDCM

Colour differences are hard to notice

3 > 5 SDCM

Colour differences are visible with the human eye

> 7 SDCM

Colour differences are highly noticeable
The SDCM degree of a luminaire changes throughout its lifespan. Some LED modules can maintain a very high colour quality for the first 1,000 hours but then deteriorate rapidly. Other factors that negatively impact the light colour quality are the design of the luminaire and insufficient cooling of the led module. The majority of Projection's luminaires rate 3 SDCM.



COLOUR RENDERING

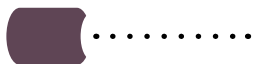
The Colour Rendering Index (CRI) is a measurement that rates light sources from 0 to 100. The top rating, 100, represents the sought-after quality of natural light; as the rating decreases, so does the quality of colour representation. In short, the higher the CRI, the better the light.

Projection.eu uses only above 90 CRI for led luminaires.



BEAM SPREAD

The reflector of a luminaire directs the light in a certain way. Retail spaces should use fixtures with a variety of beam spreads to achieve different lighting effects. Projection.eu has a wide variety of reflectors, from narrow to wide beams.



LUMINOUS FLUX

Or light output, is the total amount of light radiated by a light source per second. It is expressed in lumens (lm).



ILLUMINANCE

Or lighting level, is the quantitative expression for the luminous flux incident on a surface. Illuminance is expressed in lux (lx). One lux equals one lumen per square meter..

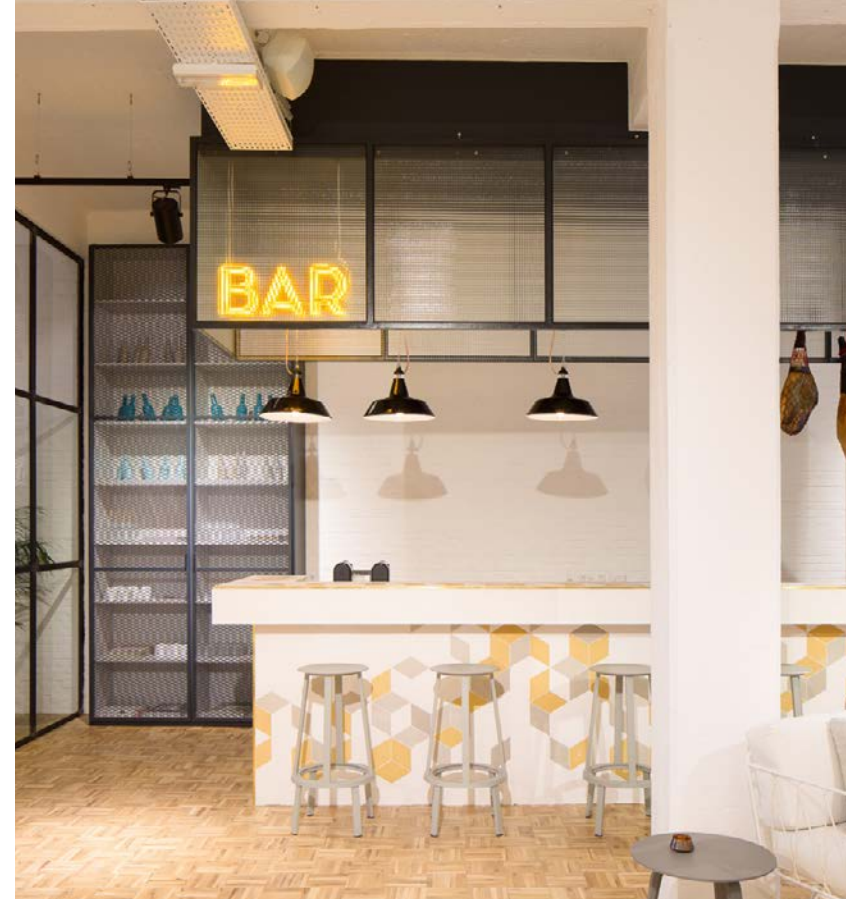


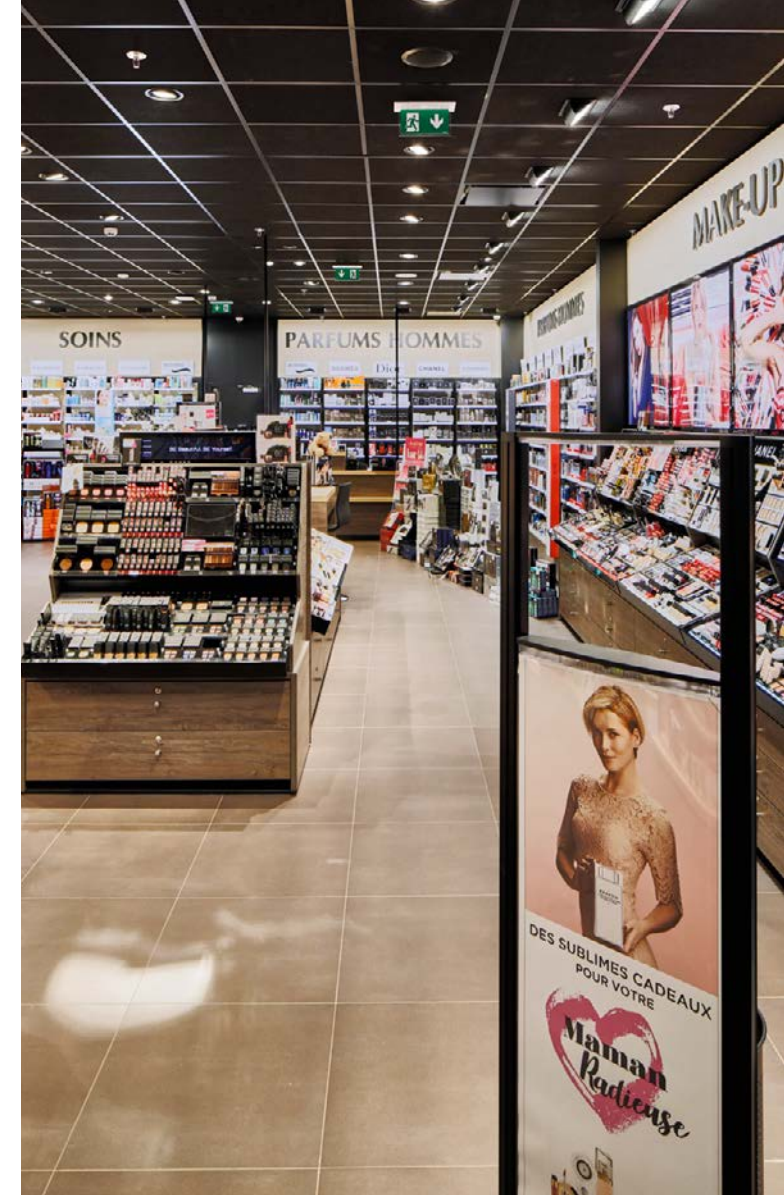
FASHION





FINE FOOD & HORECA







SUPER-MARKETS & SHOWROOMS





OFFICES



CONTENTS

00	01	02	03	04	05
PRODUCT RANGES	RECESSED	SUSPENDED AND SURFACE-MOUNTED	TRACKS	TECHNICAL INFORMATION	CONTACT
24	26	64	106	112	119

Product ranges

PRO-LED

Our Pro-LED range comprises all possible lighting solutions, from recessed and surface-mounted or suspended luminaires, to decorative lighting and tailor-made solutions. This range of high-performance LED luminaires offers premium lighting products which have been developed as a result of continuous efforts to increase cost-effectiveness, energy efficiency and light quality.

Beside this 100% LED product range, Projection.eu also has other LED solutions available, such as the AR111 LED lamp (up to 45,000 hours' life span) and the MR16 LED lamp (up to 40,000 hours' life span). These lamps fit into your current light fixtures and give the same warm light as traditional halogen lamps. The advantage however is that you will save up to 80% on energy costs compared to traditional halogen lighting which will significantly reduce your energy bill. On top of that LED lamps produce less heat, meaning your air conditioning costs will also decrease.

PRO-BUDGET

The Pro-Budget range proposes a number of recessed and surface-mounted lighting products at very competitive prices. The limited number of components and accessories allow a rapid production process and offer more interesting opportunities for large-scale storage. The Pro-Budget luminaires are only available in certain predefined colours and the range of reflectors and led modules available for these lighting products is limited as well.

RECESSED 1



Recessed

28 Cintra LED



30 Lola LED



32 Raya LED



34 Arya LED



36 Carolina LED



38 Carat 1 LED



40 Carat 2 LED



42 Indra LED



44 Multiple 1 LED



46 Multiple 2 LED



48 Crea 1 LED



50 Crea 2 LED



52 Piazza LED



54 Basic Fix



56 Basic Adjustable



58 Cob Fix LED



60 Cob Adjustable LED



62 EO LED





Cintra LED



white black grey chrome RAL

PRO-BUDGET

LED MODULE: 700 > 6000 LUMEN

CRI

80 >

90 >

CCT

2700K

3000K

3500K

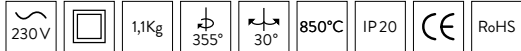
4000K

PW

ACCESSORIES



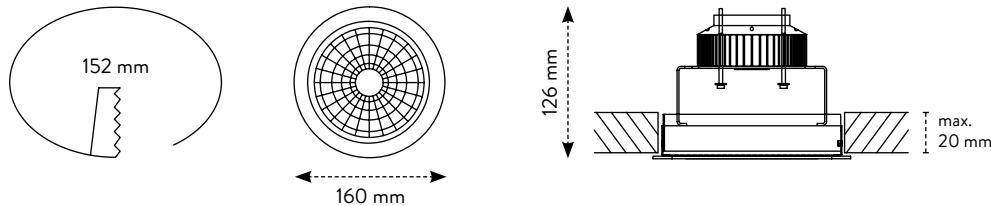
MORE INFORMATION



Passive/Active cooling - Electronic gear included
Also available: LED AR111 - 10W (G53)

REFLECTORS

10° 20° 30° 40° 60°





Lola LED



 white  black  grey  chrome  RAL

PRO-LED

LED MODULE: 700 > 6000 LUMEN

CRI

80 >
90 >

CCT

2700K
3000K
3500K
4000K

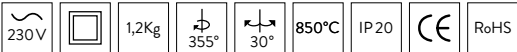
PW

ACCESSORIES

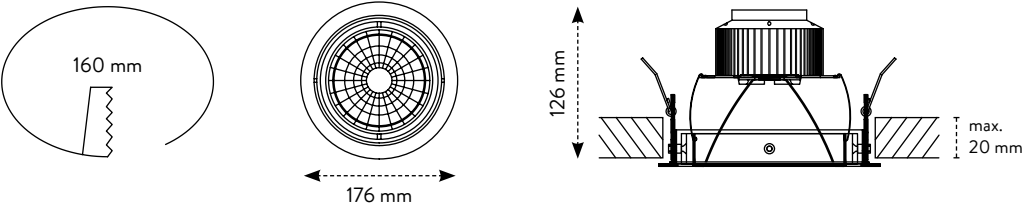


Stirrup for thick ceilings (max. 10 cm) available

MORE INFORMATION



Passive/Active cooling - Electronic gear included
Also available: LED AR111 - 10W (G53)





Raya LED



white black grey chrome RAL

PRO-BUDGET

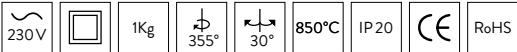
LED MODULE: 700 > 4000 LUMEN

CRI 80 > 90 >
CCT 2700K 3000K 3500K 4000K PW

ACCESSORIES



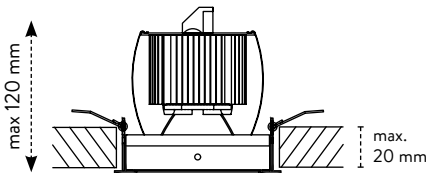
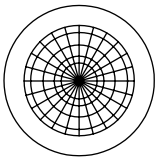
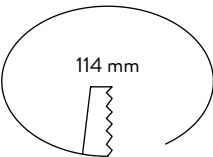
MORE INFORMATION



Passive cooling - Electronic gear included

REFLECTORS

10° 20° 30° 40° 50°





Arya LED



white black grey chrome RAL
copper matte gold matte silver matte

Different colour combinations possible

PRO-LED

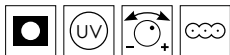
LED MODULE: 700 > 2000 LUMEN

CRI 80 > 90 >
CCT 2700K 3000K 3500K 4000K PW

REFLECTORS

40°

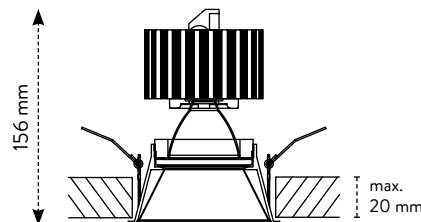
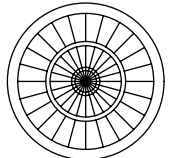
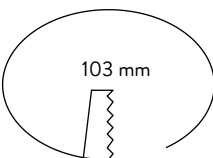
ACCESSORIES



MORE INFORMATION



Passive cooling - Electronic gear included





Carolina LED



white black grey chrome RAL

PRO-LED

LED MODULE: 700 > 4000 LUMEN

CRI

80 >

90 >

CCT

2700K

3000K

3500K

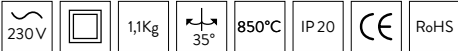
4000K

PW

ACCESSORIES



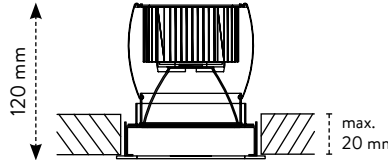
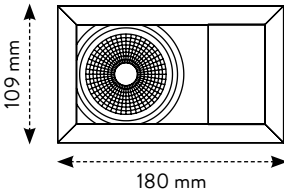
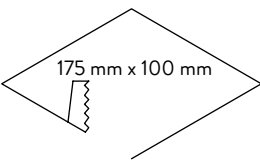
MORE INFORMATION



Passive cooling - Electronic gear included

REFLECTORS

10° 20° 30° 40° 50°





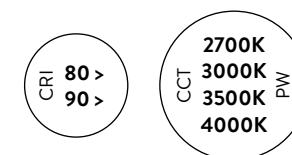
Carat 1 LED



☐ white
 ☐ black
 ☐ grey
 ☐ chrome
 ☐ RAL

PRO-LED

LED MODULE: 700 > 4000 LUMEN



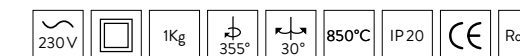
REFLECTORS



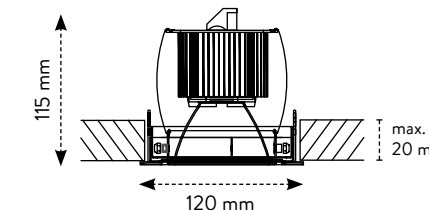
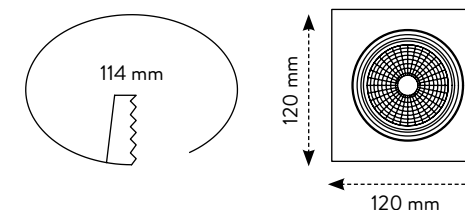
ACCESSORIES



MORE INFORMATION

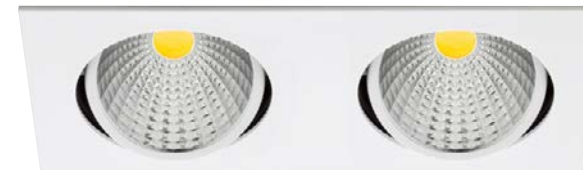


Passive cooling - Electronic gear included





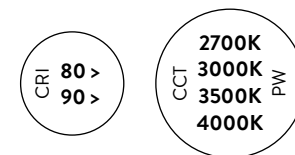
Carat 2 LED



white black grey chrome RAL

PRO-LED

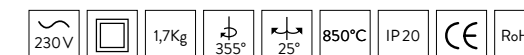
LED MODULE: 700 > 4000 LUMEN



ACCESSORIES



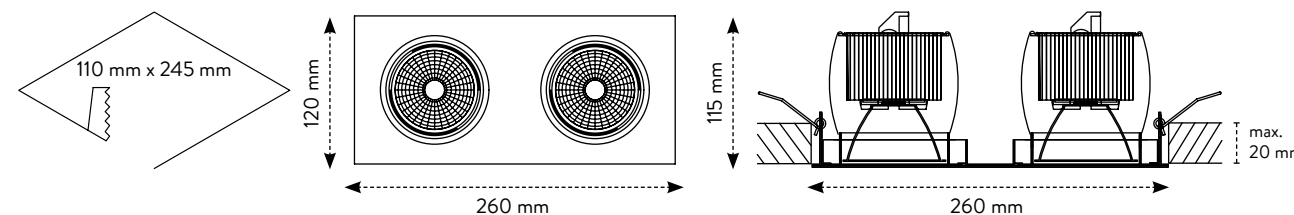
MORE INFORMATION



REFLECTORS

10° 20° 30° 40° 50°

Passive cooling - Electronic gear included



Projection.



Indra LED



- white black grey chrome RAL
- copper matte gold matte silver matte

Different colour combinations possible

PRO-LED

LED MODULE: 700 > 6000 LUMEN

CRI

80 >

90 >

CCT

2700K

3000K

3500K

4000K

PW

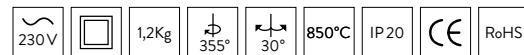
REFLECTORS

- 10°
- 20°
- 30°
- 40°
- 50°

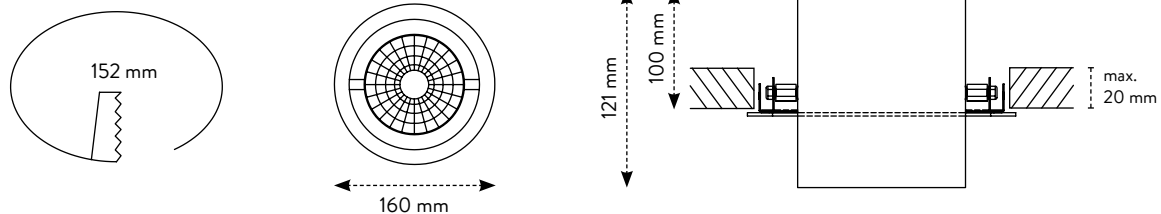
ACCESSORIES



MORE INFORMATION



Passive/Active cooling - Electronic gear included





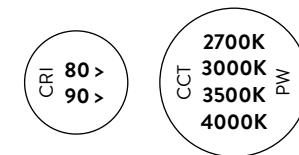
Multiple 1 LED



white black grey chrome RAL

PRO-LED

LED MODULE: 700 > 6000 LUMEN



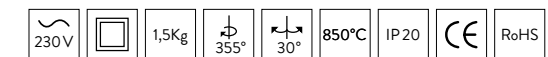
REFLECTORS

10° 20° 30° 40° 60°

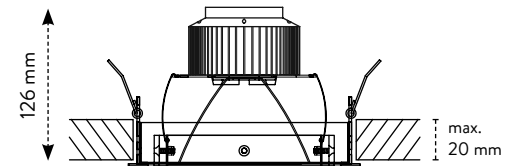
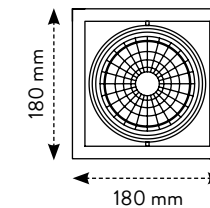
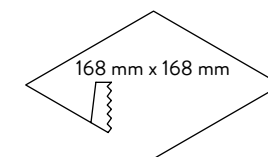
ACCESSORIES



MORE INFORMATION



Passive/Active cooling - Electronic gear included
Also available: LED AR111 - 10W (G53)





Multiple 2 LED



white black grey chrome RAL

PRO-LED

LED MODULE: 700 > 6000 LUMEN

CRI

80 >

90 >

CCT

2700K

3000K

3500K

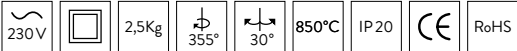
4000K

PW

ACCESSORIES



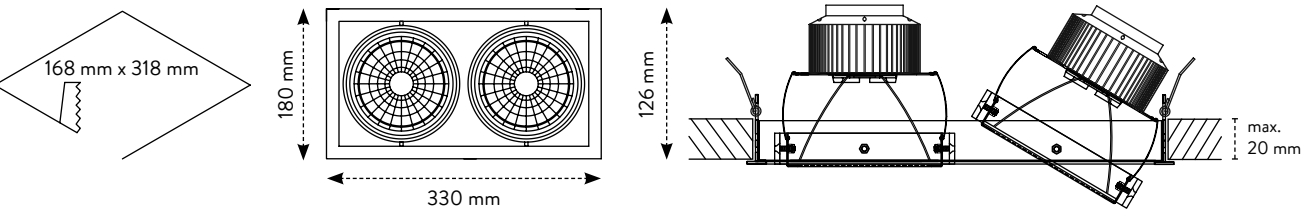
MORE INFORMATION



Passive/Active cooling - Electronic gear included
Also available: LED AR111 - 10W (G53)

REFLECTORS

10° 20° 30° 40° 60°





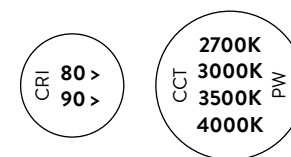
Crea 1 LED



white
black
grey
chrome
RAL

PRO-LED

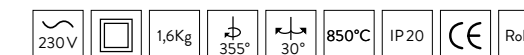
LED MODULE: 700 > 6000 LUMEN



ACCESSORIES



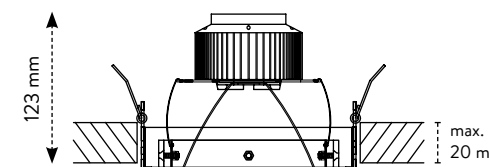
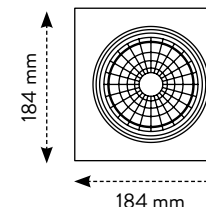
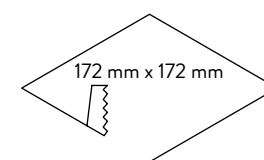
MORE INFORMATION



Passive/Active cooling - Electronic gear included
Also available: LED AR111 - 10W (G53)

REFLECTORS

10°
20°
30°
40°
60°





Crea 2 LED



white black grey chrome RAL

PRO-LED

LED MODULE: 700 > 6000 LUMEN

CRI

80 >

90 >

CCT

2700K

3000K

3500K

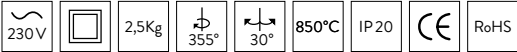
4000K

PW

ACCESSORIES



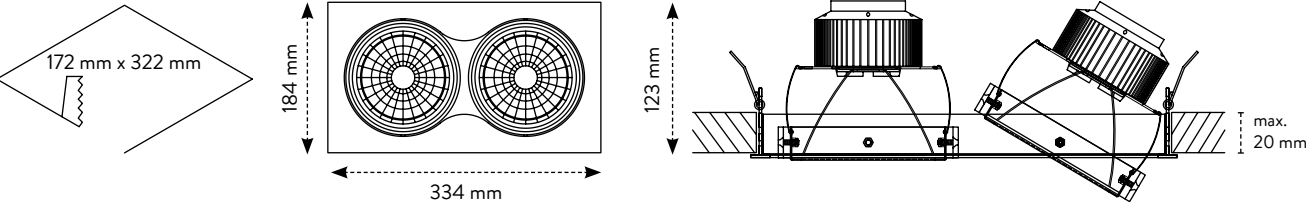
MORE INFORMATION



REFLECTORS

10° 20° 30° 40° 60°

Passive/Active cooling - Electronic gear included
Also available: LED AR111 - 10W (G53)





Projection.eu

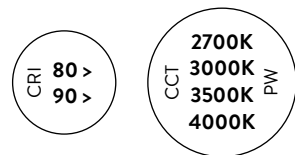
Piazza LED



white black grey

PRO-LED

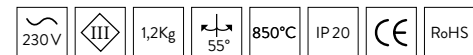
LED MODULE: 700 > 5000 LUMEN



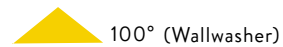
ACCESSORIES



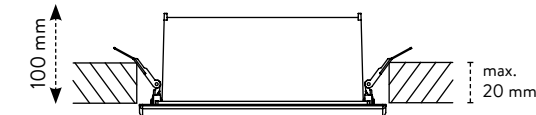
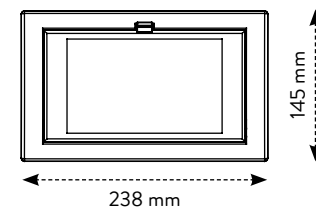
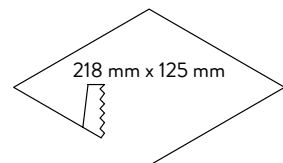
MORE INFORMATION



REFLECTORS



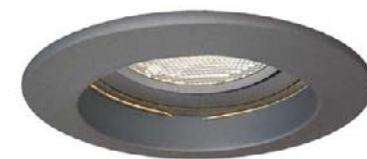
Passive cooling - Electronic gear included



Projection.

VIDEO
CONFERENCE

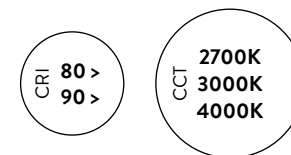
Basic Fix



☐ white
 ☐ black
 ☐ grey
 ☐ chrome

PRO-LED

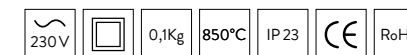
GU5.3 - GU10: 4 > 8 W



ACCESSORIES



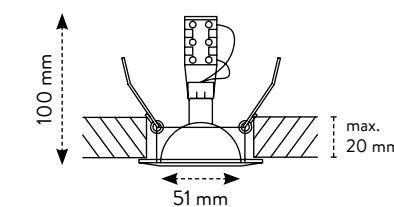
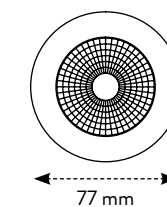
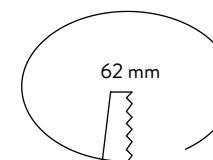
MORE INFORMATION



Electronic gear included

REFLECTORS

24°
 40°





Basic Adjustable



white black grey chrome

PRO-LED

GU5.3 - GU10: 4 > 8 W

CRI

80 >
90 >

CCT

2700K
3000K
4000K

ACCESSORIES



MORE INFORMATION

230V

0,1Kg

850°C

350°

30°

IP23

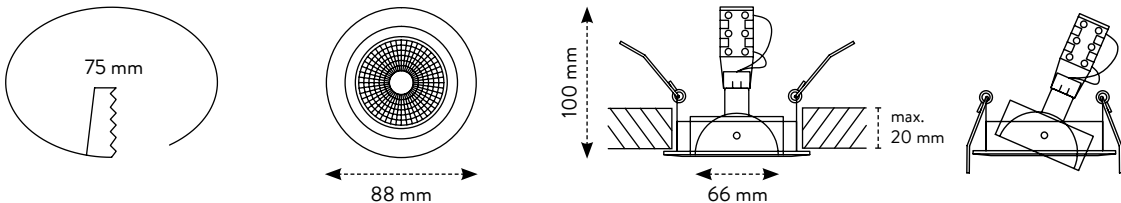
CE

RoHS

REFLECTORS

24° 40°

Electronic gear included





Cob Fix LED



☐ white ☒ black ☐ grey ☐ chrome ☐ RAL

PRO-LED

LED MODULE: 450 > 830 LUMEN

CRI

75 >
80 >
85 >

CCT

2700K
3000K
4000K
6000K

ACCESSORIES



MORE INFORMATION

230V

0,2Kg

850°C

IP20

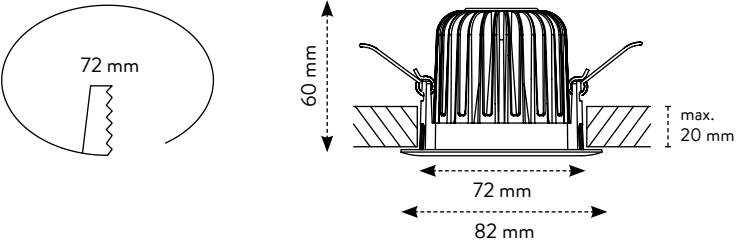
CE

RoHS

Passive cooling - Electronic gear included

REFLECTORS

25° 40° 60°





Cob Adjustable LED



white black grey chrome RAL

PRO-LED

LED MODULE: 450 > 830 LUMEN

CRI
75 >
80 >
85 >

CCT
2700K
3000K
4000K
6000K

REFLECTORS

25° 40° 60°

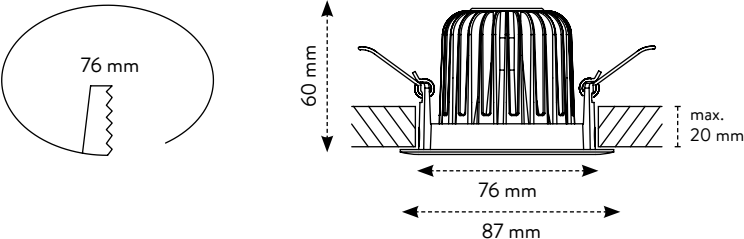
ACCESSORIES



MORE INFORMATION

230V 0,2Kg 30° 850°C IP20 CE RoHS

Passive cooling - Electronic gear included





EO LED



white

PRO-LED

LED MODULE: 3600 LUMEN

CRI 80 >

CCT 3000K
4000K

ACCESSORIES

- Round version available
- Suspension kit available

MORE INFORMATION

230V

4,4Kg

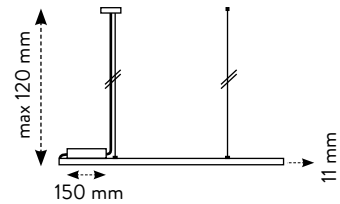
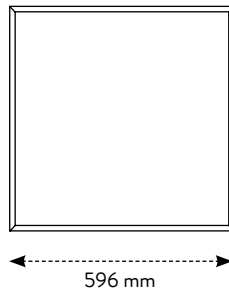
850°C

IP20

CE

RoHS

Passive cooling - Electronic gear included
Suspended installation possible



SURFACE-MOUNTED & SUSPENDED



Surface-mounted & Suspended

66 Lara LED

68 Twiks LED

70 Zebra LED

72 Free Tora LED

74 Midi Dry LED

76 Midi Tora LED

78 Baya LED

80 Luna LED

82 Midi Luna LED

84 Zora LED

86 Bora LED

88 Xena LED



90 Cinna

92 Cinna Wall

94 Cyrus LED

96 Clox LED

97 Acco T8 LED

98 Pro-X LED

100 Trax LED

Solutions in Linear LED Lighting:

102 Citizen LED

103 Single colour LED strips

104 Aluled Pro



Projection.



Lara LED



white
black
grey
chrome
RAL

PRO-BUDGET

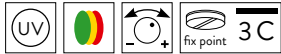
LED MODULE: 700 > 6000 LUMEN

CRI 80 >
 90 >
 CCT 2700K
 3000K
 3500K
 4000K

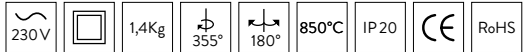
REFLECTORS

20°
 30°
 40°

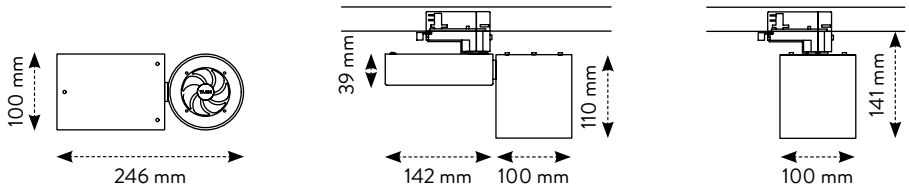
ACCESSORIES



MORE INFORMATION



Passive/Active cooling - Electronic gear included





Twiks LED



white black grey chrome RAL

PRO-BUDGET

LED MODULE: 700 > 6000 LUMEN

CRI

80 >

90 >

CCT

2700K

3000K

3500K

4000K

PW

ACCESSORIES

UV

RGB

fix point

3C

MORE INFORMATION

230V

3Kg

355°

180°

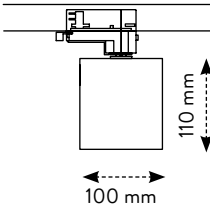
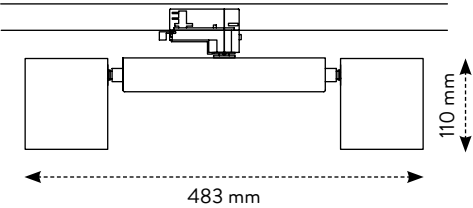
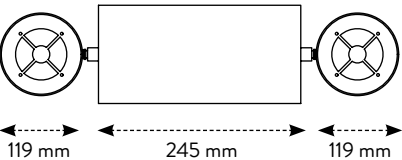
850°C

IP20

CE

RoHS

Passive/Active cooling - Electronic gear included





Projection™

Zebra LED



white black grey chrome RAL

PRO-LED

LED MODULE: 700 > 6000 LUMEN

CRI

80 >

90 >

CCT

2700K

3000K

3500K

4000K

PW

ACCESSORIES

UV

3C

MORE INFORMATION

230V

1,5Kg

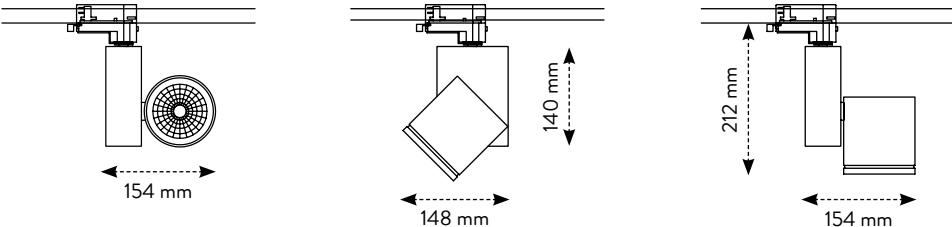
850°C

IP20

CE

RoHS

Passive/Active cooling - Electronic gear included





Free Tora LED



white
black
grey
chrome
RAL

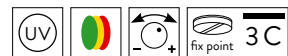
PRO-LED

LED MODULE: 700 > 6000 LUMEN

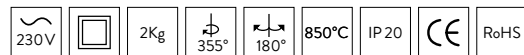
CRI
80 >
90 >

CCT
2700K
3000K
3500K
4000K
PW

ACCESSORIES



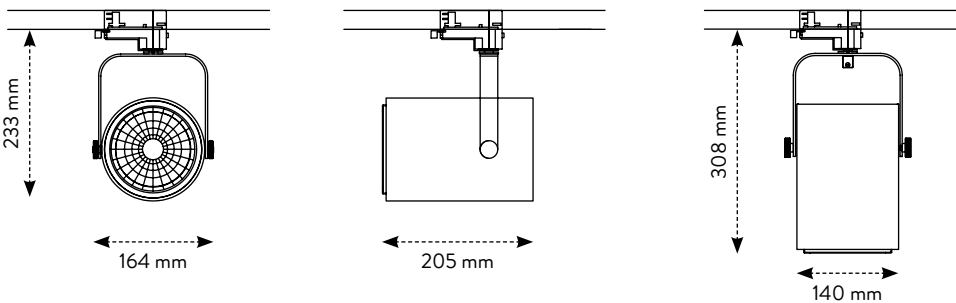
MORE INFORMATION



Passive/Active cooling - Electronic gear included
Also available: LED AR111 - 10W (G53)

REFLECTORS

10°
20°
30°
40°
60°





Midi Dry LED



☐ white
 ☒ black
 ☐ grey
 ☐ chrome
 ☐ RAL

PRO-BUDGET

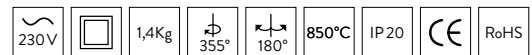
LED MODULE: 700 > 4000 LUMEN

CRI 80 >
90 >
 CCT 2700K
3000K
3500K
4000K

ACCESSORIES



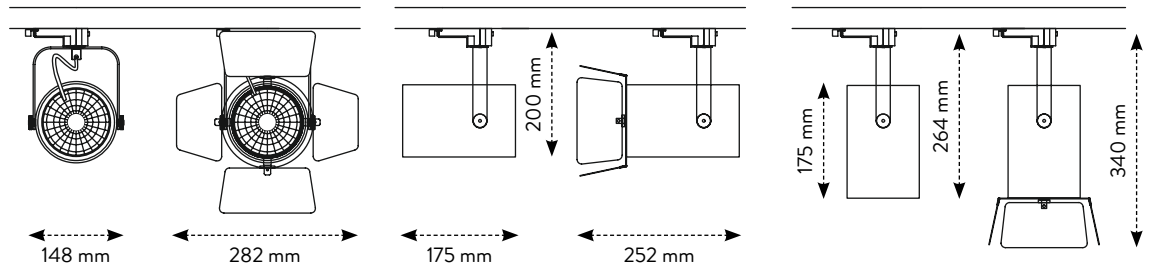
MORE INFORMATION



REFLECTORS

▲ 20°
 ▲ 30°
 ▲ 40°

Passive/Active cooling - Electronic gear included





Midi Tora LED



☐ white
 ☐ black
 ☐ grey
 ☐ chrome
 ☐ RAL

PRO-LED

LED MODULE: 700 > 6000 LUMEN

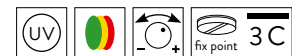
CRI 80 >
90 >

CCT 2700K
3000K
3500K
4000K

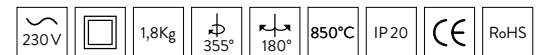
REFLECTORS

▲ 20°
 ▲ 30°
 ▲ 40°

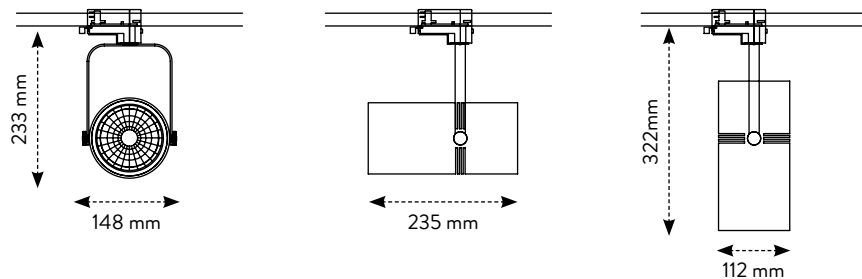
ACCESSORIES



MORE INFORMATION



Passive/Active cooling - Electronic gear included





Baya LED



 white  black  grey  chrome  RAL

PRO-LED

LED MODULE: 700 > 4000 LUMEN

CRI

80 >
90 >

CCT

2700K
3000K
3500K
4000K

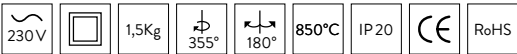
PW

ACCESSORIES

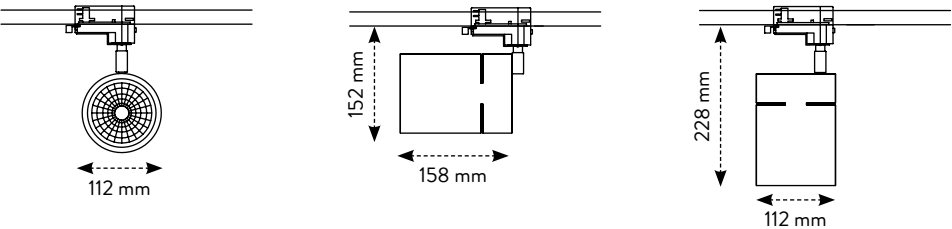


Compact version available with track adapter with built-in LED driver for passive cooling fixtures

MORE INFORMATION



Passive/Active cooling - Electronic gear included





Luna LED



white black grey chrome RAL

PRO-LED

LED MODULE: 1000 - 4000 LUMEN

CRI

80 >

90 >

CCT

2700K

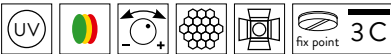
3000K

3500K

4000K

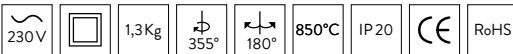
PW

ACCESSORIES

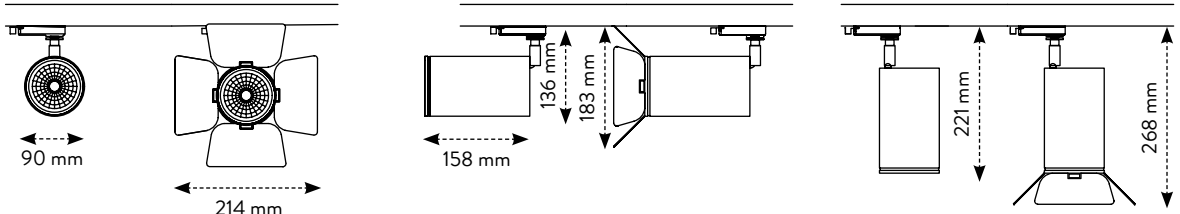


Version with stirrup available

MORE INFORMATION



Passive cooling - Electronic gear included





Midi Luna LED



white black grey chrome RAL

PRO-LED

LED MODULE: 1000-3500 LUMEN

CRI

80 >

90 >

CCT

2700K

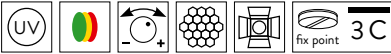
3000K

3500K

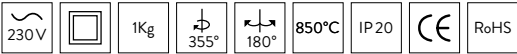
4000K

PW

ACCESSORIES



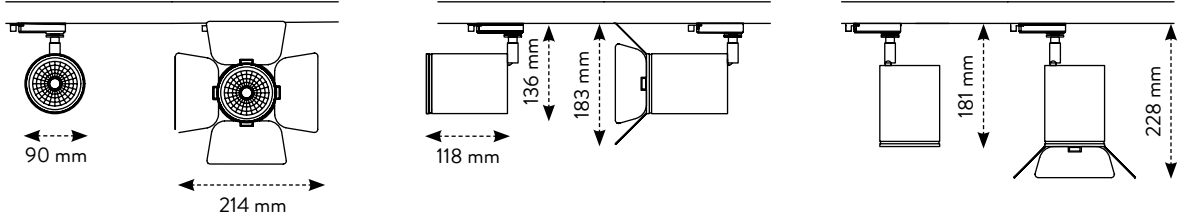
MORE INFORMATION



Passive cooling - Electronic gear included

REFLECTORS

10° 20° 30° 40° 50°





Zora LED

 white / black
  black

LED MODULE: 700 > 4000 LUMEN

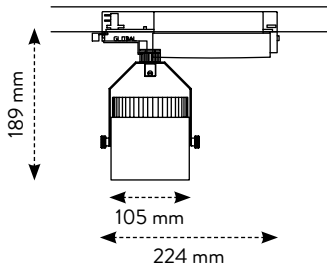
CRI 80 >
90 >

 CCT 2700K
3000K
3500K
4000K

 PW

REFLECTORS

 10°
  20°
  30°
  40°
  50°



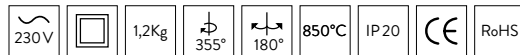
PRO-BUDGET

ACCESSORIES



Compact version available with track adapter with built-in LED driver for passive cooling fixtures

MORE INFORMATION



Passive cooling - Electronic gear included



Bora LED



white
 black
 grey
 chrome
 RAL

PRO-LED

LED MODULE: 700 > 2000 LUMEN

CRI
80 >
90 >

CCT
2700K
3000K
3500K
4000K
PW

REFLECTORS

20°
 30°
 40°

ACCESSORIES

UV

fix point

3C

MORE INFORMATION

230V

1,4Kg

355°

180°

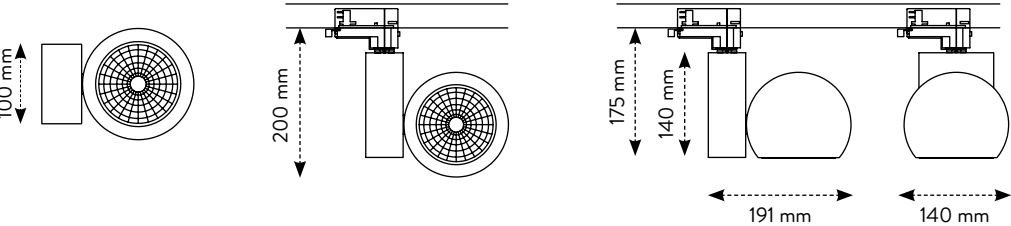
850°C

IP20

CE

RoHS

Passive cooling - Electronic gear included





Xena LED



white black grey chrome RAL

PRO-LED

LED MODULE: 700 > 6000 LUMEN

CRI

80 >

90 >

CCT

2700K

3000K

3500K

4000K

PW

ACCESSORIES

3C

MORE INFORMATION

2,3Kg

850°C

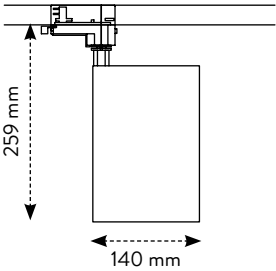
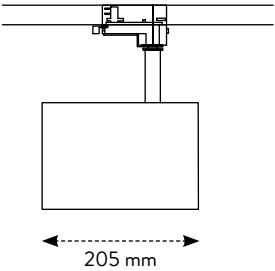
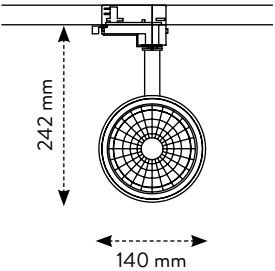
IP20

RoHS

Passive/Active cooling - Electronic gear included
Also available: LED AR111 - 10W (G53)

REFLECTORS

10° 20° 30° 40° 60°





Cinna



white black grey chrome RAL

PRO-LED

G53 - LED AR111 10W: 600 LUMEN

CRI

80 >

90 >

CCT

2700K

3000K

4000K

ACCESSORIES



MORE INFORMATION

12V

20V

1Kg

355°

90°

850°C

IP 20

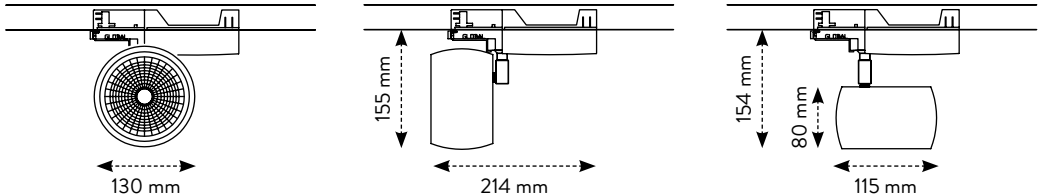
CE

RoHS

REFLECTORS

8° 24° 40°

Electronic gear included





Cinna wall



 white  black  grey  chrome  RAL

PRO-LED

G53 - LED AR111 10W: 600 LUMEN



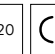
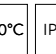
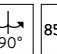
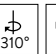
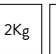
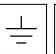

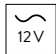
CRI
80 >
90 >

CCT
2700K
3000K
4000K

ACCESSORIES



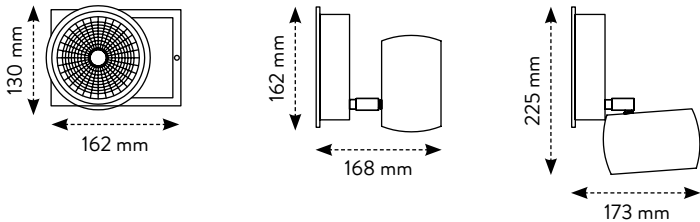
MORE INFORMATION



Electronic gear included

REFLECTORS

 8°  24°  40°





Cyrus LED



white black grey chrome RAL

PRO-LED

LED MODULE: 700 - 2000 LUMEN

CRI
80 >
90 >

CCT
2700K
3000K
3500K
4000K
PW

ACCESSORIES

UV

Italy

fix point

3C

Cyrus LED UP: version without cable, to be attached to ceiling directly

MORE INFORMATION

230V

±

1,6Kg

850°C

IP20

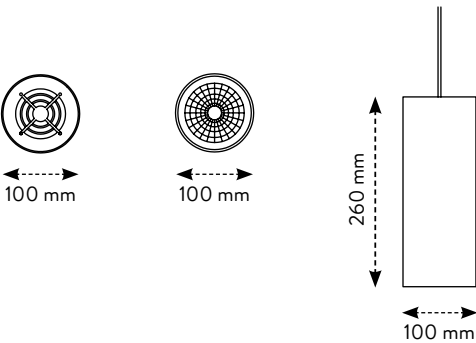
CE

RoHS

Passive cooling - Electronic gear included
Attachment to ceiling with base or tracks
Various hanging cable colours available

REFLECTORS

10° 20° 30° 40° 50°



Clox LED



 white  black  grey

PRO-LED

LED MODULE: 700 > 6000 LUMEN

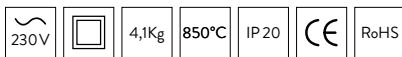
CRI 80 >
90 >

CCT 2700K
3000K
3500K
4000K
PW






ACCESSORIES

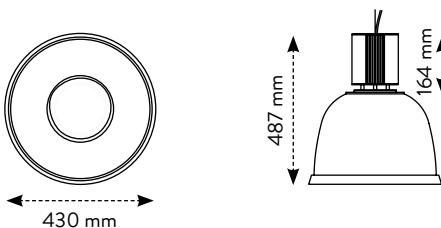


MORE INFORMATION




REFLECTORS

 10°  20°  30°  40°  60° Passive/Active cooling - Electronic gear included



Acco T8 LED



 grey Polycarbonate hermetic luminaire

PRO-LED

G13: T8 LED: 20W

CRI 80 >

CCT 3000K
4000K

ACCESSORIES



MORE INFORMATION



Electronic gear included
Full LED version available



Pro-X LED



white

PRO-LED

LED MODULE: 4400 > 9800 LUMEN (40W-58W-77W)

CRI 80 >

CCT 3000K 4000K

ACCESSORIES



MORE INFORMATION

230V

3Kg

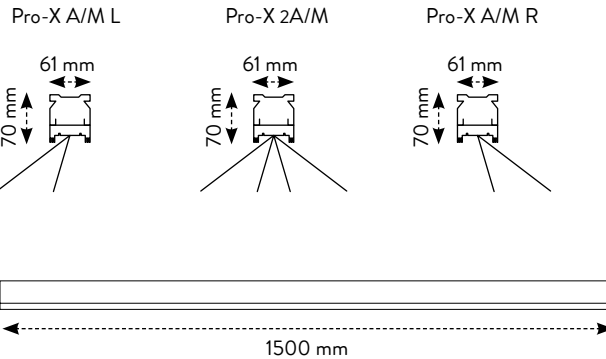
850°C

IP20

CE

RoHS

Electronic gear included



PRO-X SUSPENSION KITS :
Suspension cable (1.5m/3.5m/5m) in combination with ceiling fixation (Steeldeck fixation plate) and Pro-X bracket.

Kit A - for standard ceilings



Kit C - for ceiling tiles



Fixation for ceiling tiles:



Ceiling clip in combination with bracket



Trax LED



☐ white
 ☐ black
 ☐ grey
 ☐ RAL

PRO-BUDGET

LED MODULE: 0,6M : 2200 LUMEN
1,5M : 5500 LUMEN

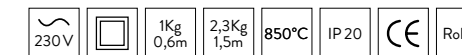
CRI 80 >
90 >

CCT 3000K
4000K
5000K

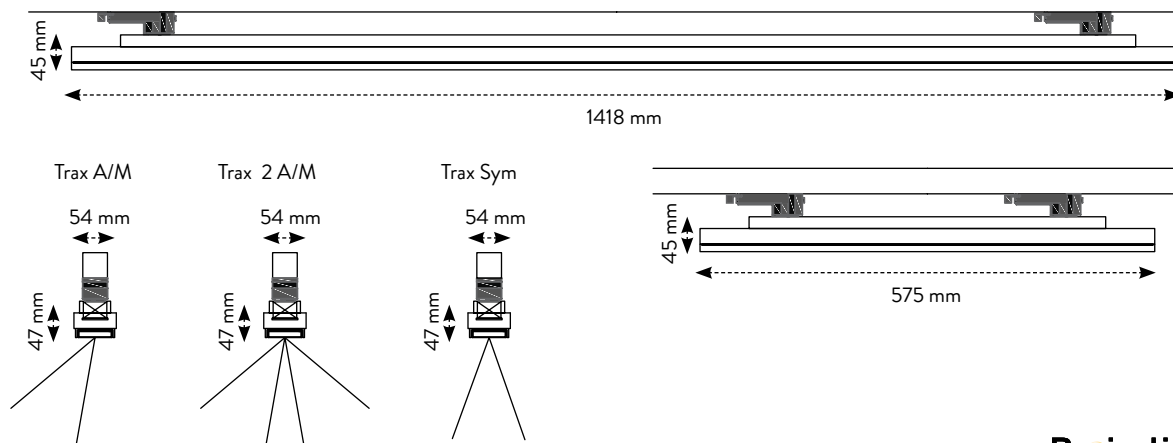
ACCESSORIES



MORE INFORMATION



Passive cooling - Electronic gear included



SOLUTIONS IN LINEAR LED LIGHTING



Citizen LED



PRO-LED

Tailor-made led profile (linear - rectangular or square frame - U-shape) in anodized aluminium with pre-punched holes for mounting.

4000°K: 320LM PER 3 WATT LED

CRI 85 >

CCT 2700K
3000K
3500 K
4000K
5000K

ACCESSORIES



MORE INFORMATION

12V

24 V

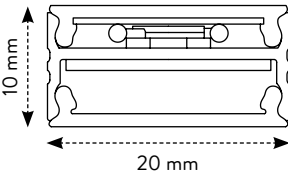
850°C

IP20

CE

RoHS

Driver included



RANGE OF POSSIBLE LENGTHS	NUMBER OF LED (1 LED=3W)
min. 180 to 360mm	1
min. 360 to 720mm	2
min. 540 to 1080mm	3
min. 720 to 1500mm	4
min. 900 to 1500mm	5
min. 1080 to 1500mm	6
min. 1260 to 1500mm	7
min. 1440 to 1500mm	8



Single colour LED strips



PRO-LED

Two-sided adhesive tape to be installed on solid heat-conducting surfaces:

4000°K: 11w/m: 765lm/m
19w/m: 1530 lm/m
33w/m: 3016 lm/m

CRI 80 >

CCT 2400K
2700K
3000K
4000K
6000K

ACCESSORIES



Various anodized aluminium ledstrip profiles in combination with frosted/semi-frosted/clear covers are available.

MORE INFORMATION

24 V

850°C

IP20

CE

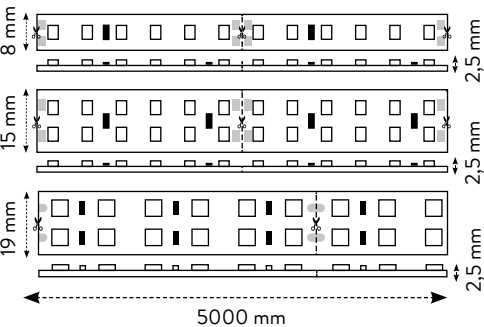
RoHS

Driver included

REFLECTORS



120°



11W: cuttable every 5cm

19W: cuttable every 5cm

33W: cuttable every 8,33cm

Projection.



Aluled Pro



grey

PRO-LED

LED MODULE ON ALUMINIUM PROFILE: 1100 > 6600 LUMEN

ACCESSORIES

Mounting brackets and connectors available for easy installation

CRI

80 >
90 >

CCT

2700K
3000K
4000K

MORE INFORMATION

12V

0,4Kg

850°C

IP20

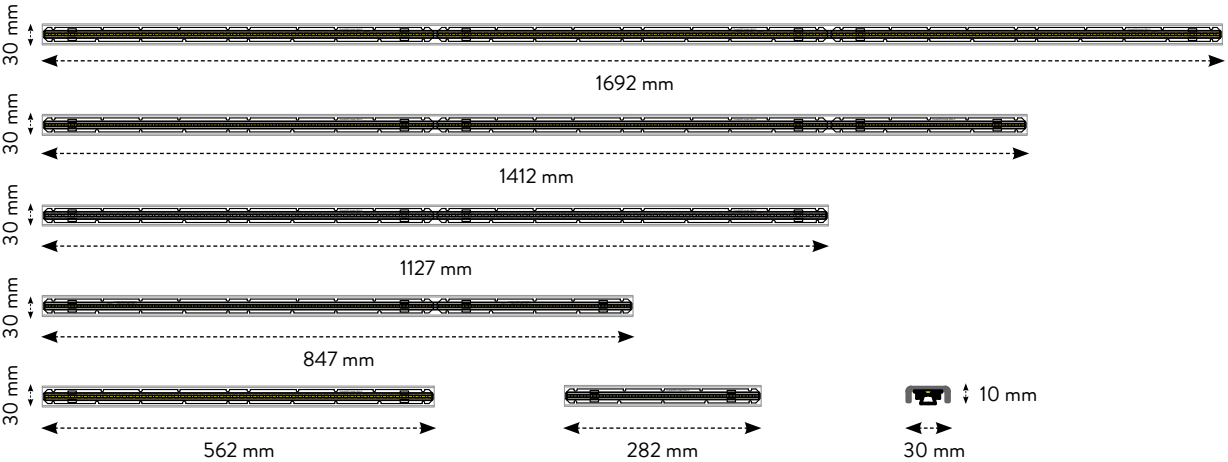
CE

RoHS

REFLECTORS

60°

Passive cooling - Electronic gear included





Tracks

108 3-circuit track system

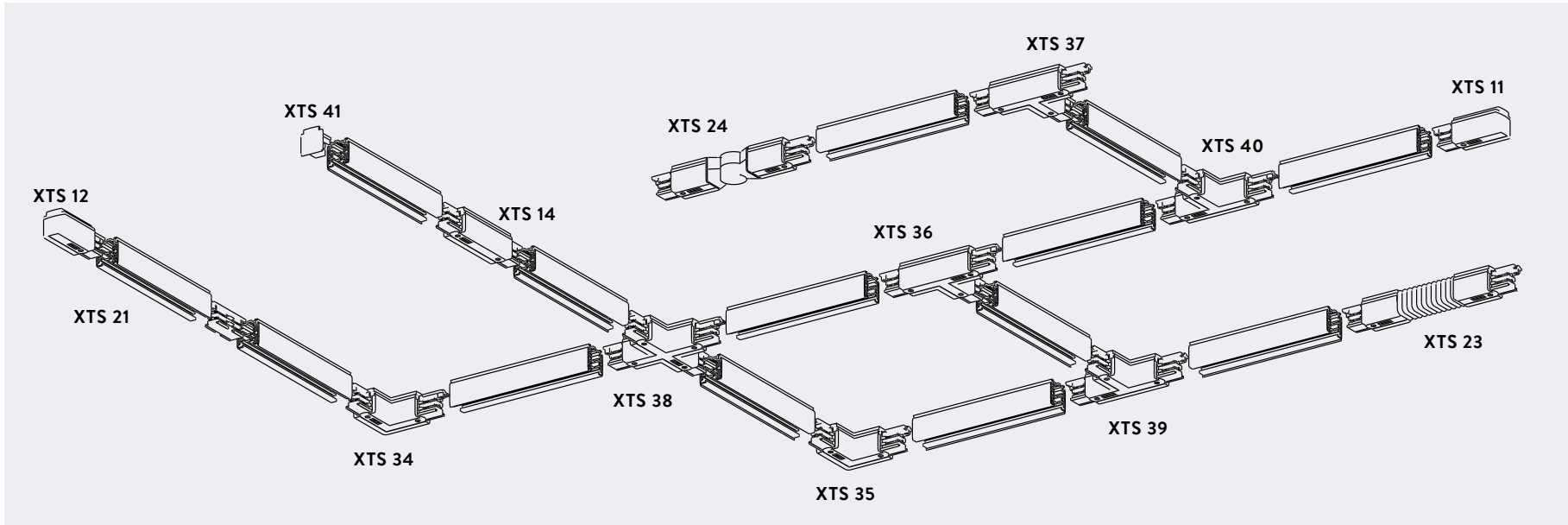
110 3-circuit Pulse track system

Lighting tracks allow more flexibility in lighting planning. Should lighting requirements change, the spotlights can easily be rearranged.

Track systems in 3-circuit (Pulse) version are quick and easy to install which results in overall cost savings. They are the quality choice of professionals and lighting manufacturers.

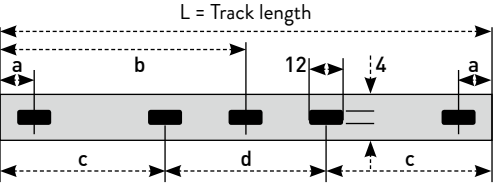
Lighting tracks are designed for easy surface mounting on ceilings and walls, or recessed mounting in suspended ceilings, they can also be suspended at any desired height.

The modular structure of the system makes it easy to extend and adapt to various needs. Different types of reliable connectors ensure fast and easy installation.

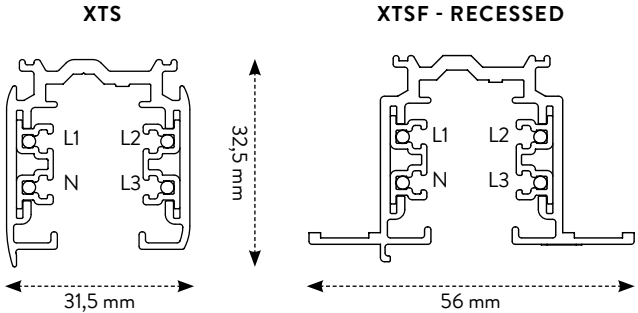


3-circuit track system

The 3-circuit system has high loading capacity and the possibility of forming independent fixture groups in all three circuits.

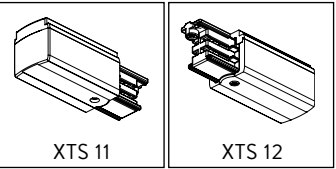


L /mm	a /mm	b /mm	c /mm	d /mm
1000	250	1000	1000	1000
2000	250			
3000	250			
4000	250			

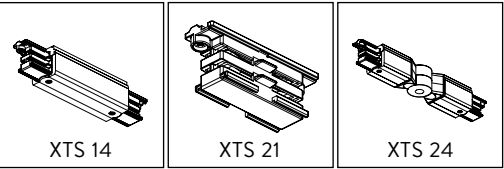


ACCESSORIES :

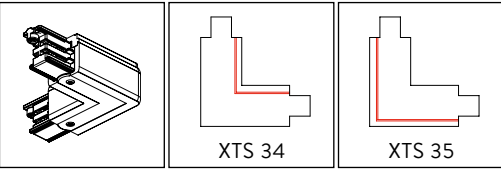
End feed



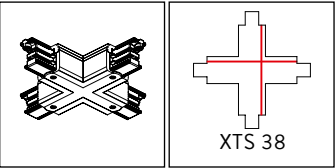
Middle feed



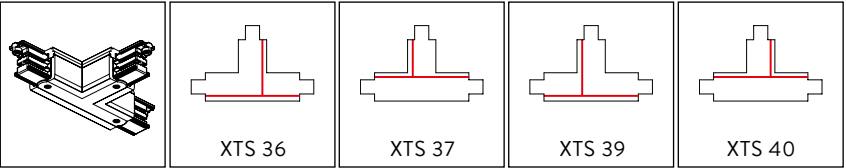
L-feed



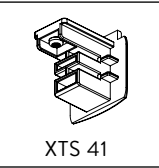
X-feed



T-feed



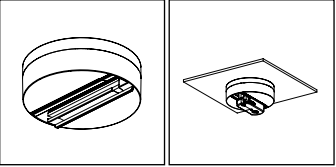
End cap



Other solutions available for heavy track structures and when the number of suspension cables needs to be decreased for aesthetic reasons.

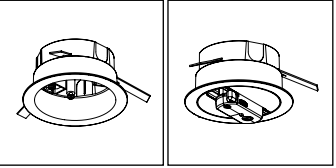
ADAPTER ACCESSORIES :

GA 70



Fix point adapter connector for surface installation

XTSA 71



Recessed box for recessed installation with Fix point GA 70

3C-TRACK SUSPENSION KITS :

Suspension cable (1.5m/3.5m/5m) in combination with ceiling fixation and bracket.

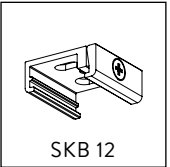
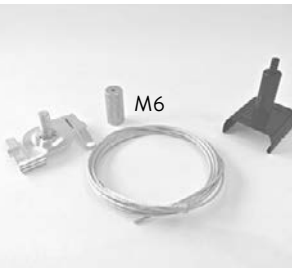
Kit A - for standard ceilings



Kit B - for standard ceilings



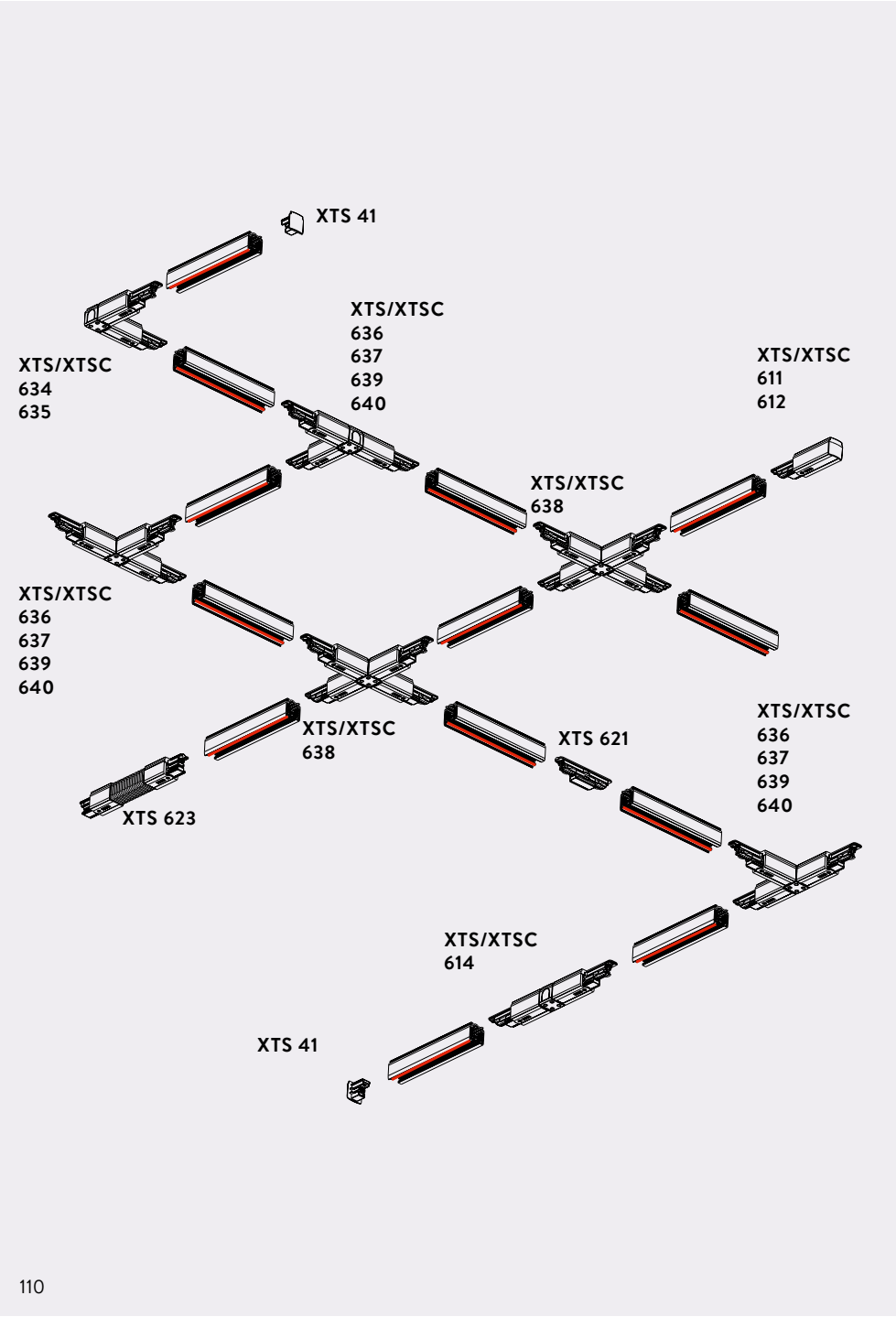
Kit C - for ceiling tiles



Fixation for standard ceilings



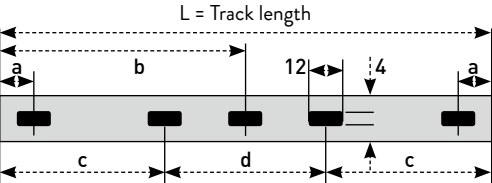
Ceiling clip in combination with bracket



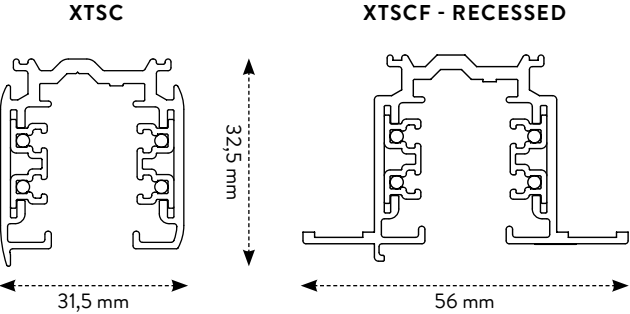
3-circuit Pulse track system

The PULSE track system is a 3-phase lighting track system that includes both normal input voltage and wires for transmitting the control signal to the lights.

This makes it possible to use smart control systems without control units such as Dali. As a consequence, lights can be turned on and off, brightened and dimmed flexibly as separate groups.

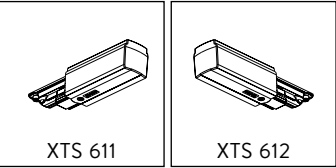


L /mm	a /mm	b /mm	c /mm	d /mm
1000	250	1000		
2000	250			
3000	250		1000	1000
4000	250		1500	1000

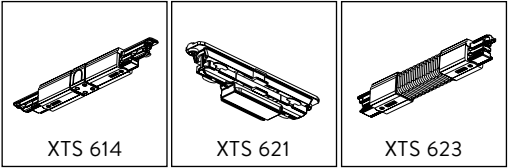


ACCESSORIES :

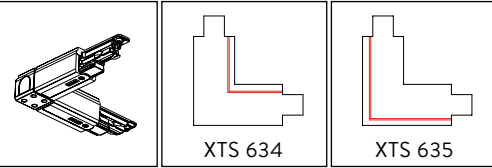
End feed



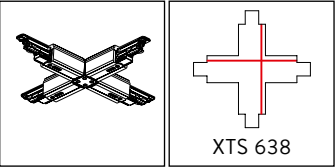
Middle feed



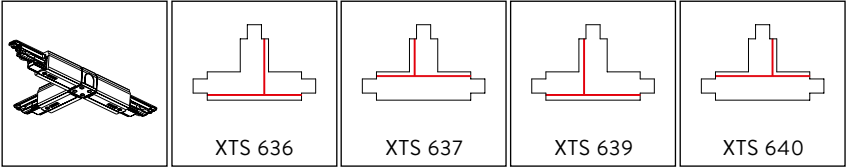
L-feed



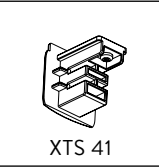
X-feed



T-feed



End cap



Other solutions available for heavy track structures and when the number of suspension cables needs to be decreased for aesthetic reasons.

3C-TRACK SUSPENSION KITS :

Suspension cable (1.5m/3.5m/5m) in combination with ceiling fixation and bracket.

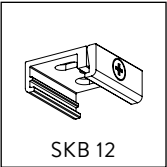
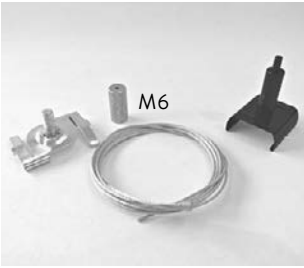
Kit A - for standard ceilings



Kit B - for standard ceilings



Kit C - for ceiling tiles



SKB 12
Fixation for standard ceilings



Ceiling clip
in combination
with bracket



Technical Information

- 114 LED cooling options: Active versus Passive cooling
- 114 Dimming
- 115 Retail in the future & Building automation
- 116 Electronic gear
- 117 Plug 'n Light: Wieland installation couplers
- 117 Ingress Protection (IP)
- 118 Symbols & Codes

LED cooling options: Active versus Passive cooling

One of the biggest advantages to LED fixtures is the long life of the LED modules. However, excessive heat in a LED fixture shortens the LED module lifespan and can do damage to the underlying components. LED luminaires do not emit a great deal of heat towards the front, much of their heat comes out the back of the LED luminaire itself. There are 2 ways to disperse this waste heat and ensure the longevity of the LED fixture: **active & passive cooling**.

Dimming

There are many types of controls and control systems: from high voltage (traditional phase control or reverse phase control) to low voltage (0-10V, DMX, DALI) and even some new entries with embedded wireless connectivity in the fixture, from a single switch or dimmer to a centralized lighting control system. They all have the same purpose: to maximize energy savings, extend system life, enhance flexibility, and provide a comfortable environment for building occupants.

Passive cooling technology uses a heatsink. The heatsink transfers heat from any solid material to a fluid medium like air or water. One of the challenges in using a heatsink is the fact that you need the ability to absorb the heat and dissipate it at a rate which keeps up with the amount of heat coming off the LED. If the heatsink does not have the optimal amount of capacity, the heat can gradually build up behind the LED luminaire and start causing damage to the components. This is why we recommend an additional 5cm to the build-in depth when using recessed luminaires. This extra

space is used to help disperse the heat. **Active cooling** technology uses convection to move heat off of the LED module. Convection transfers heat from one place to another by the movement of fluids. This movement is caused by an active fan which moves air, reduces the heat and keeps the fixture cooler. The more volume and velocity of air moving across the fixture, the better the heat dissipation is. The advantage of active cooling is reduced fixture weight, faster heat dispersion and the ability to boost the lumen output without damaging the LED module or reducing its lifespan. To achieve optimal performance, you must choose a combination of fixtures, drivers, and controls to match your specific project requirements. The type of control you choose will depend on the results you want to achieve. It is important to define expectations right up front. In summary, the driver determines the achievable dimming range and the best possible performance of the lamp or fixture. The control determines whether or not the best possible performance is realized in the application.

Retail in the future & Building automation

Building automation is the automatic control of heating, ventilation and air conditioning (HVAC), lighting, security and other systems through a building management system. Projection.eu believes that the benefits of building automation are improved shopping comfort, efficient operation of building systems, reduction in energy consumption and operating costs, and improved life cycle of utilities. Automation can be simple, like lighting the reception from 8h till 19h. Or turning the lights brighter when a person enters the fitting room and start playing some relaxing music. Automation can be complex such as office spaces with automated blinds, lights and temperature control. Or shops where light, sound, fragrance and temperature are regulated by their individual system.

This is an example of a distributed control system. There is a network of electronic devices designed to monitor and control different systems in a building. DALI, for example, is such a control system for lighting, OpenTherm is one for HVAC systems. But each system is a closed entity and they cannot communicate with each other. This is where a building automatization system (BAS) comes into play. A BAS uses the internet to connect and control all separate control systems. This means that you use the same system to lower the shutters, regulate the heating and control the lights.

Retail in the future Projection.eu can help you to integrate BAS in your store(s) which will create a huge advantage for facility managers as they don't have to be on site anymore. From a distance a single facility manager will be able to remotely control and monitor several shops spread over the country or even over the whole globe. In case of abnormalities, he or she can use the software to adjust the techniques (such as lights, heating ...) or get a notification when an electronic device is about to fail, allowing him or her to take preventive action. Since it is a building automation system, it can also be used for security, time registration or even advertising and the improvement of the overall shopping experience.

Electronic Gear

Electronic drivers for LED modules

A LED driver is the power supply for a LED system, much like a ballast is to a fluorescent or HID lighting system. LEDs are low-voltage light sources, requiring a constant DC voltage or current to operate optimally. Operating on a low-voltage DC power supply enables LEDs to be easily adapted to different power supplies, permits longer stand-by power, and increases

safety. LEDs, therefore, require a device that can convert incoming AC power to the proper DC voltage, and regulate the current flowing through the LED during operation. The driver converts 230V (or other voltage) 60Hz AC power to low-voltage DC power required by the LEDs, and protects the LEDs from line-voltage fluctuations.



Electronic transformers

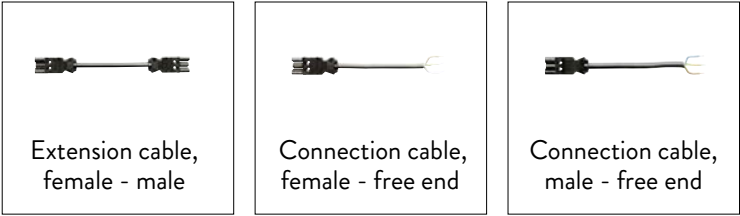
Electronic transformers **offer the best way of integrating low-voltage LED lamps in lighting solutions easily.** The innovative electronic system with switch-on current limiting, soft-starting and a constant non-load dependent

output voltage over the entire output range, ensures optimum lamp operation and hence long lamp service life. Available in 60-105-150-250V.



Plug ‘n Light: Wieland installation couplers

IMPORTANT: Dangerous compatibility can occur between different manufacturer installation coupler systems. Installation couplers intended for permanent connection in fixed installations need to comply with the EN IEC 61535 standard.




Ingress Protection (IP)


Ingress Protection (IP) rating is used to specify the environmental protection - electrical enclosure - of electrical equipment. As defined in international standard IEC 60529, it classifies the degrees of protection provided against the intrusion of solid objects (including body parts like hands and fingers), dust, accidental contact, and water in electrical enclosures. The IP rating normally has two numbers:
1. Protection from solid objects or materials
2. Protection from liquids (water)


IP _ _		Degree of Ingress Protection	
1 st number	Protection against Dust and Solid Objects	2 nd number	Protection against Moisture
0	No-protection	0	No-protection
1	Protection against solid objects > 50mm	1	Protection against dripping water
2	Protection against solid objects > 12mm	2	Protection against dripping water when tilted up to 15°
3	Protection against solid objects > 2.5mm	3	Protection against spraying water
4	Protection against solid objects > 1mm	4	Protection against splashing water
5	Dust-protected	5	Protection against water jets
6	Dust-tight	6	Protection against powerful water jets
		7	Protection against temporary immersion up to 1m
		8	Protection against submersion


Symbols & Codes


COLOURS


 white

 black

 grey

 chrome


 all RAL colours are available

 white / black

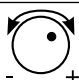
REFLECTORS

 50° Reflector degree


ACCESSORIES CODES



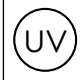
Cover plate round or rectangular




Dimmable




Fix point adapter connector for 3-circuit track




UV protection glass




Honey comb



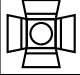
Emergency lighting battery (1 or 3 hours)



Coloured glass

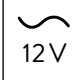


Wieland cable 18/3




Barn doors

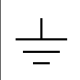
MORE INFORMATION CODES




Input voltage 12V



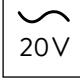
Degree of Ingress Protection



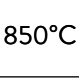
Fixture class 1



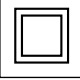
Horizontal adjustability



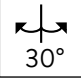
Input voltage 20V



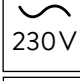
Glow wire tested



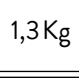
Fixture class 2




Maximal inclination




Input voltage 230V



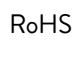
Luminaire weight (led module & driver included)



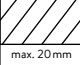
Fixture class 3



CE Standard



Compliant with Restriction of Hazardous Substances Directive



Maximum ceiling height

CONTACT 5

Contact

Showroom + offices:

Projection.eu
Avenue Kersbeeklaan 290/2
1180 Brussels
Belgium

Tel: +32 2 370 01 20
Fax: +32 2 370 01 22
projection@projection.eu
www.projection.eu

Thanks to:

Special thanks to all people who contributed to the making of this catalogue and the light fixtures presented in it.

The background of the entire page is a black field filled with a dense, overlapping pattern of thin, parallel lines. These lines are colored in a vibrant red and a bright cyan blue. They originate from the right side of the image and fan out towards the left, creating a strong sense of perspective and depth. The lines are not perfectly straight but have a slight, organic waver to them.

PROJECTION.EU

RESPONSIBLE EDITOR: N. FEDORENKO, PROJECTION.EU - AVENUE KERSBEEKLAAN 290/2, 1180 BRUSSELS
DESIGN: 2210.BE / PICTURES: A. BIBAUT